



WUC-2458

2.4GHz to 5.8GHz Updown Converter



If you want to set up wireless outdoor connection without the interferences in the crowded 2.4GHz spectrum, the WUC-2458 is the solution for you.

Run your Outdoor Wi-Fi without Interferences

The WUC-2458 is an wireless frequency converter that will allow your 802.11b wireless device to operate in the less crowded 5.8GHz spectrum. It comes with a 250mW amplifier to allow operating distance of up to 16km with used with the 22dBi Grid antenna.

Weather Proof for Outdoor Application

The converter comes in 2 separate Outdoor and Indoor Unit. The outdoor unit is completely water proof and house the frequency converter and amplifier. The indoor unit is a DC injector unit that will take the power from adapter and the RF signal from the AP, then combine it to supply both power and RF data to the Outdoor unit through 50ohm antenna cable. Therefore, you can connect any 802.11b device indoor and leave the outdoor unit & Antenna outdoor.



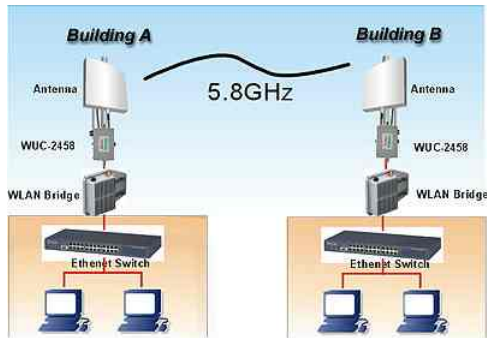
Recommended Antenna

WAE-5822GR: 5.8GHz 22dBi Grid Antenna	
Frequency	5725~5850 Mhz
Gain	22dBi
Horizontal Coverage	13 degree
Vertical Coverage	10 degree
Front to Back Ratio	25dB
Impedance	50 Ohm
Max Input Power	20dBm (100mW)
VSWR	<1.5:1 Average
Connector	N-type Female
Weight	1.4kg
Dimension	11.8" (300 mm) x 15.7" (400 mm)
Mounting	2 in. (50.8 mm) diameter mast max.
Elevation Angle	0 to +15°
Operating Temperature	-45° C to +85°

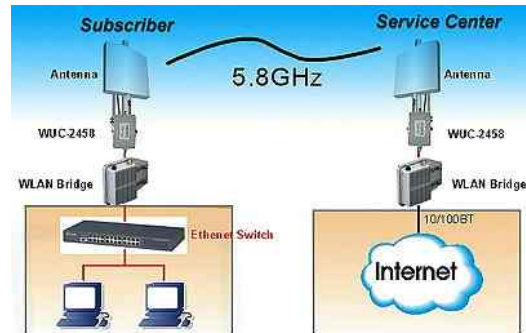




Building to Building



WISP application



Specification

- Convert 2.4Ghz to 5.8Ghz
- Weather proof
- Separate Outdoor and Indoor Unit
- DC power feed through RF cable
- Easy to mount
- Auto gain adjustment

Output Power

- 24dB

Operating Range

- 2400-2484 MHz to 5728~5812MHz

Operating Mode

- Bi- Directional TDD

Transmit Gain

- 12dB

Output Power

- 250mW (24dBm)

TX Input Power

- 3dBm Min/12dBm Max

Receiver Gain

- 9 dB

Noise Figure

- <5 dB

Connectors

- N-Type Female, 50 Ohm

Power Consumption

- 4W

Switching Time

- < 1 msec

Frequency Response Flatness

- +/- 1.5dB

AMP Dimensions

- 170L x 135W x 30H (mm)

Operating Temperature

- -30C to +60C

Ordering Information

WUC-2458 5.8GHz Updown Converter