

WHB-5854A

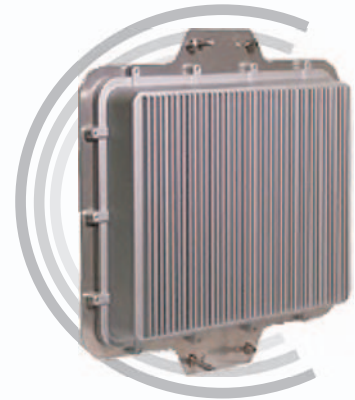
Air Live

5~5.8GHz 802.11a Outdoor Wireless Bridge

The WHB-5854A wireless bridge allows you to set up wireless outdoor connection without the interferences in the crowded 2.4GHz spectrum.

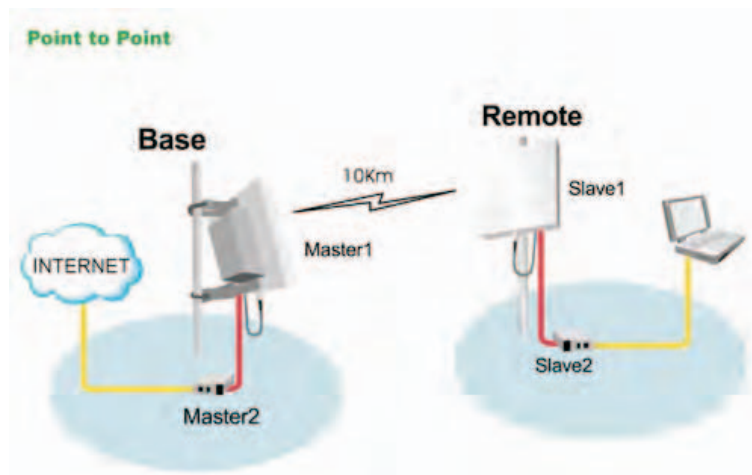
Running your 802.11a Network in the uncrowded 5Ghz ~ 5.8Ghz spectrum, it allow you to have a stable Wi-Fi connection over long distance. It supports all 3 segments of frequency range so optimal compliance in different region. The frequency range is changeable through the web interface.

Equipped with a cast aluminum water and shock proof enclosure, theWHB-5854A can operate in all kinds of weather condition. With up to 200mW(23dBm) of power, it reach distance of over 10 kilometers in open space when used with our WAE-5822GR antenna. For CE compliance, it can be tuned to work within the 100mW restriction of the standard.



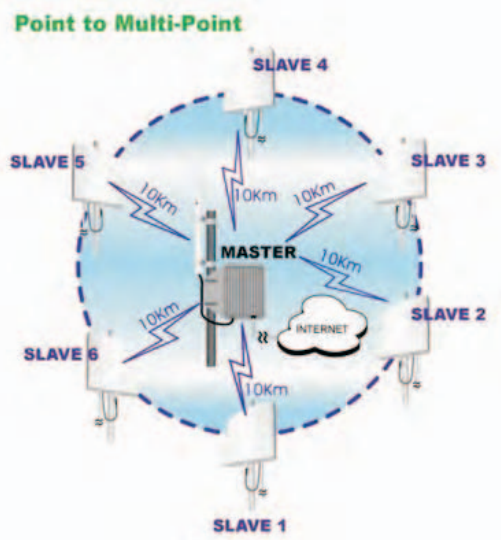
Point-to-point Mode

Bridges in point-to-point mode connect two networks in different locations through a single wireless link. This allows two widely separated sites to share resources, including a single high-speed connection to the Internet wide area to share resources, including a single high-speed connection to the Internet.



Point-to-Multipoint Mode

Bridges in point-to-multipoint mode connect three or more networks in scattered buildings through wireless links. This allows numerous sites in a wide area to share resources, including a single high-speed connection to the Internet.



Auto IP assignment and management

The unit includes a complete Power over Ethernet package with a 25 meter water-proof cable and DC injector unit. Therefore you can use indoor power source and connect to network indoor. The outdoor unit can be installed within close distance to antenna for minimum cable signal loss.

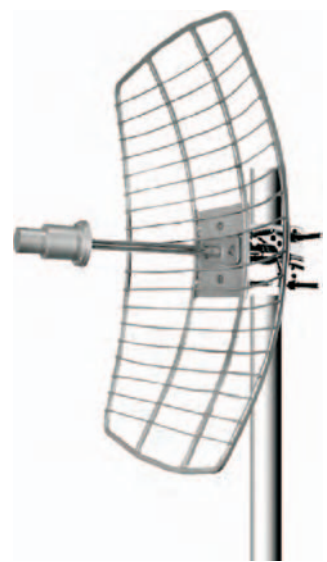
The easy-to-use Web management interface features auto Bridge learn and auto IP assignment for simple installation. Data security is protected by the WEP or MAC access control functions.

The WHB-5854A is ideal for deployment in office buildings, farm ranch, resort, and campus environments. Users no longer have to pay high price for dedicated lease line or fiber optic cabling. With OvisLink's wide range of wireless accessories and expertise in outdoor solution, you can confident with OvisLink's outdoor wireless solution

Note: Please check whether operation in the 5.8GHz is allowed in your country

Recommend Antenna

WAE-5822GR 5.8GHz 22dBi Grid Antenna	
Frequency	5725~5850 MHz
Gain	22dBi
Horizontal Coverage	13 degree
Vertical Coverage	10 degree
Front to Back Ratio	25dB
Impedance	50 Ohm
Max Input Power	20dBm (100mW)
VSWR	<1.5:1 Avg
Connector	N-type Female
Weight	1.4kg
Dimension	11.8" (300 mm) x 15.7" (400 mm)
Mounting	2 in. (50.8 mm) diameter mast max.
Elevation Angle	0 to +15°
Operating Temperature	-45° C to +85°



Standard

IEEE 802.11a
Operate in 5~5.8Ghz Spectrum

Superior Coverage

Advanced radio technology provides outstanding performance at distances over 20 km (Maximum distance depends on choice of antenna.)

Superior receiver sensitivity enhances pickup of weak data signals over greater distances.

Rugged design proven in outdoor installations in locations affected by wind, rain, and snow.

Remote Configuration

Allows administrators to manage the bridge from anywhere on the network.

DHCP client support: automatically obtains a new IP address from a DHCP server. If no DHCP server is found, automatic IP assignment allow access through fixed IP.

Bulk configuration: automatically propagates configuration settings to multiple bridges on the same subnet.

Security

WEP (Wired Equivalent Privacy): 64-bit and 128-bit

SNMP access control: SNMP authentication prevents tampering with bridge settings.

Antenna

The Bridge/AP utility performs intelligent antenna alignment monitoring for quick, convenient, and accurate alignment.

Management

Full-featured Windows-based SNMP software included

Auto IP address assignment - automatically assign itself a new IP address should the DHCP server fail.

Bridge discovery - allows quick location of all OvisLink bridges for centralized management.

Protocol filtering: saves bandwidth and increases security by preventing the bridge from transmitting specified protocols from the wired Ethernet LAN into the wireless zone.

Trap server: with auto-notification, network administrators can easily monitor operating conditions and take preventive action to ensure maximum network uptime.

Outdoor Protection

The Outdoor Protection Package allows the bridge to be located outdoors, where it may be subjected to wind, rain, and snow.

Power Over Ethernet

PoE reduces power-cable installation expenses and increases location options by carrying both data and power to the bridge through a single Ethernet cable.
Connector

Operating Frequency Range

5.125~5.350Ghz
5.470~5.750GHz
5.725 ~ 5.85GHz

Transmission Power

6~18Mbps:+20dBm or +23dBm
24~36Mbps:+18dBm
48~54Mbps:+16dBm

Receiver Sensitivity

6Mbps:-88dBm
12Mbps:-87dBm
18Mbps:-84dBm
24Mbps:-81dBm
36Mbps:-76dBm
48Mbps:-72dBm
54Mbps:-68dBm

Frequency response flatness

2.0dB (5728 ~ 5812MHz)

Switching Time

1 micro-second

Connector

50 ohm N-type female (Antenna port)
Water Proof Power Over Ethernet Connector.

Transmission Rates

54/48/36/24/18/12/6Mbps auto
fallback

Transmitter Characteristics

Frequency stability: within 25 ppm

Package content

Outdoor Bridge Unit
25m Power Over Ethernet Cable
DC Injector Unit
Power adapter
Mounting Kits

Software Support

SNMP-based network management tools for Microsoft Windows included
MIB I and MIB II support, bridge discovery, protocol filtering, trap management, firmware upgrades

Environmental Requirements

Operating Temperature: -30 to 70C
Storage Temperature: -30 to 80C
Humidity: 5% to 95%, non-condensing

Dimensions & Weight

165 X135 X 100 mm (2kg)

Ordering Information

AirLive WHB-5854A

802.11a Wireless Outdoor Bridge

Power

Input voltage 48V DC; external power supply included (input voltage 100V to 240V AC)

SNMP access control: SNMP authentication prevents tampering with bridge settings.

Operating Environments

Any OS that support Web UI

OvisLink



Head Office
2F, No. 8 Lane 130, Min-chung Rd.,
Hsin-Tien City, Taipei, Taiwan
E-mail: info@ovislink.com.tw
Support: tech@ovislink.com.tw
Web: www.ovislink.com.tw